

Name: \_\_\_\_\_

Date: \_\_\_\_\_

Partner's Name: \_\_\_\_\_

# Pitch Tendency Chart

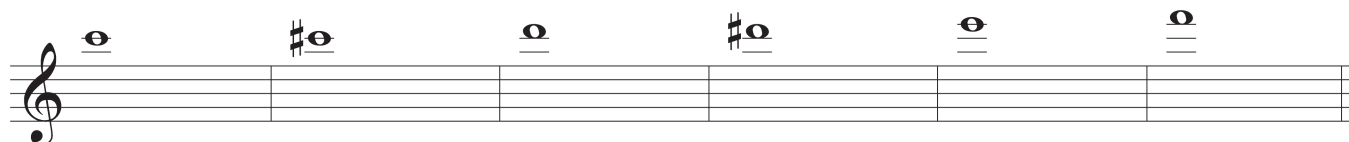
## Flute

### Directions:

1. Warm-up before charting, for a minimum of 15 minutes.
2. After warming up completely, use the electronic tuner to tune precisely to the indicated reference pitch(es).
3. Your partner will operate the tune and record your results. Do not look at the tuner while playing!
4. Play each line twice. On the first time, record the general tendency of each note. Write + for sharp, write - for flat, or write 0 for in tune.
5. On the second time, record precisely the number of cents sharp or flat the pitch is being played.

For example, if the pitch is played 5 cents flat, write -5. If the pitch is 12 cents sharp, write +12. If the pitch is in tune, write 0 (zero).

### Tuning Notes



Name: \_\_\_\_\_

Date: \_\_\_\_\_

Partner's Name: \_\_\_\_\_

# Pitch Tendency Chart

## Oboe

### Directions:

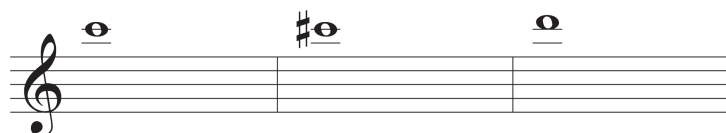
1. Warm-up before charting, for a minimum of 15 minutes.
2. After warming up completely, use the electronic tuner to tune precisely to the indicated reference pitch(es).
3. Your partner will operate the tune and record your results. Do not look at the tuner while playing!
4. Play each line twice. On the first time, record the general tendency of each note. Write + for sharp, write - for flat, or write 0 for in tune.
5. On the second time, record precisely the number of cents sharp or flat the pitch is being played.

For example, if the pitch is played 5 cents flat, write -5. If the pitch is 12 cents sharp, write +12. If the pitch is in tune, write 0 (zero).

### Tuning Notes



\*For instruments  
with Bb key only



Name: \_\_\_\_\_

Date: \_\_\_\_\_

Partner's Name: \_\_\_\_\_

# Pitch Tendency Chart

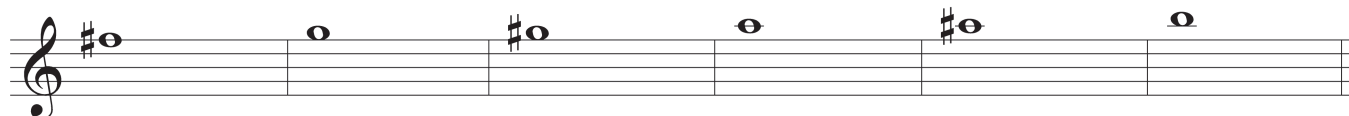
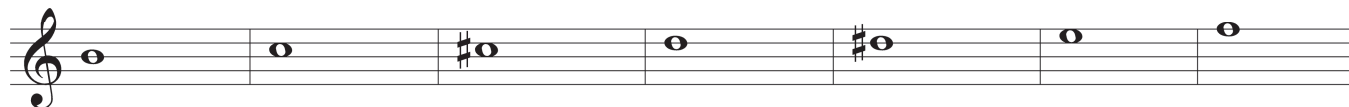
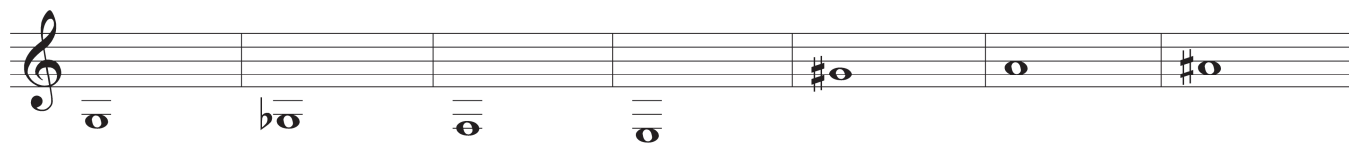
Clarinet in B $\flat$ 

## Directions:

1. Warm-up before charting, for a minimum of 15 minutes.
2. After warming up completely, use the electronic tuner to tune precisely to the indicated reference pitch(es).
3. Your partner will operate the tuner and record your results. Do not look at the tuner while playing!
4. Play each line twice. On the first time, record the general tendency of each note. Write + for sharp, write - for flat, or write 0 for in tune.
5. On the second time, record precisely the number of cents sharp or flat the pitch is being played.

For example, if the pitch is played 5 cents flat, write -5. If the pitch is 12 cents sharp, write +12. If the pitch is in tune, write 0 (zero).

## Tuning Notes



Name: \_\_\_\_\_

Date: \_\_\_\_\_

Partner's Name: \_\_\_\_\_

# Pitch Tendency Chart

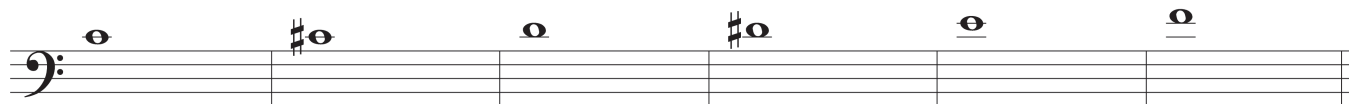
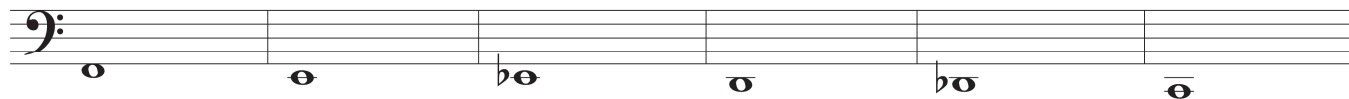
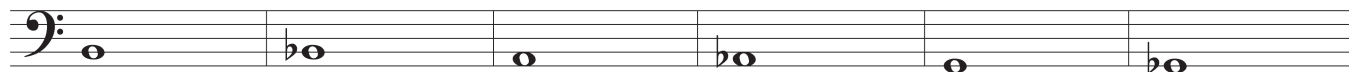
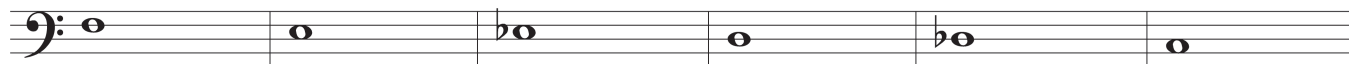
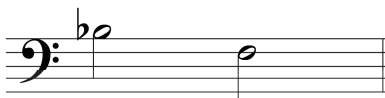
## Bassoon

### Directions:

1. Warm-up before charting, for a minimum of 15 minutes.
2. After warming up completely, use the electronic tuner to tune precisely to the indicated reference pitch(es).
3. Your partner will operate the tune and record your results. Do not look at the tuner while playing!
4. Play each line twice. On the first time, record the general tendency of each note. Write + for sharp, write - for flat, or write 0 for in tune.
5. On the second time, record precisely the number of cents sharp or flat the pitch is being played.

For example, if the pitch is played 5 cents flat, write -5. If the pitch is 12 cents sharp, write +12. If the pitch is in tune, write 0 (zero).

### Tuning Notes



Name: \_\_\_\_\_

Date: \_\_\_\_\_

Partner's Name: \_\_\_\_\_

# Pitch Tendency Chart

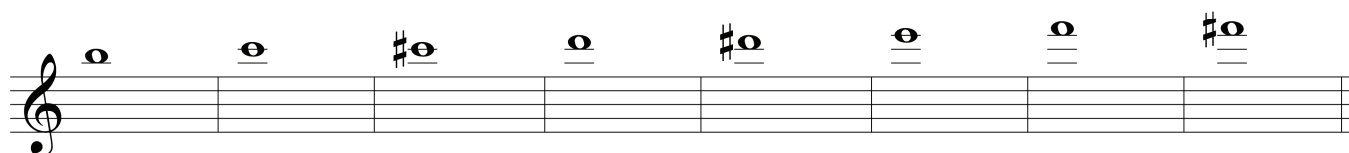
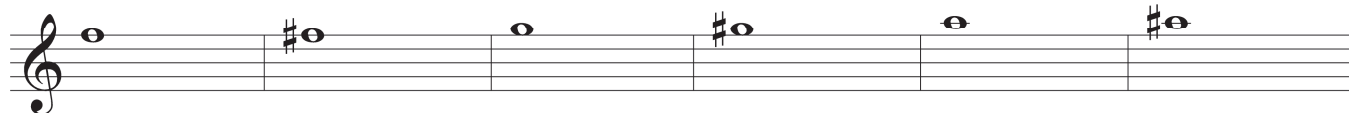
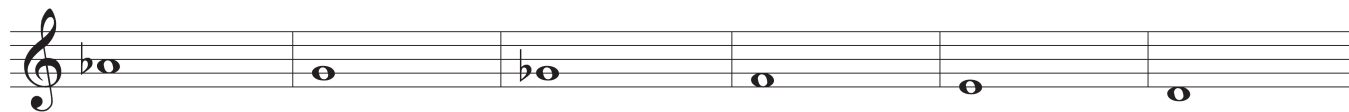
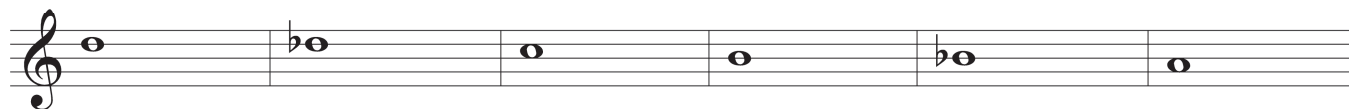
## Saxophone

### Directions:

1. Warm-up before charting, for a minimum of 15 minutes.
2. After warming up completely, use the electronic tuner to tune precisely to the indicated reference pitch(es).
3. Your partner will operate the tune and record your results. Do not look at the tuner while playing!
4. Play each line twice. On the first time, record the general tendency of each note. Write + for sharp, write - for flat, or write 0 for in tune.
5. On the second time, record precisely the number of cents sharp or flat the pitch is being played.

For example, if the pitch is played 5 cents flat, write -5. If the pitch is 12 cents sharp, write +12. If the pitch is in tune, write 0 (zero).

### Tuning Notes



\* If Equipped

Name: \_\_\_\_\_

Date: \_\_\_\_\_

Partner's Name: \_\_\_\_\_

# Pitch Tendency Chart

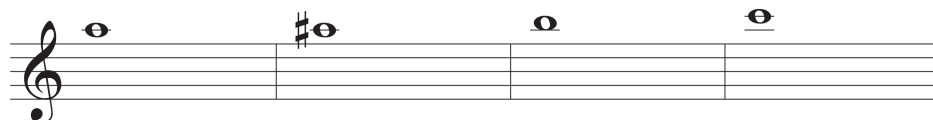
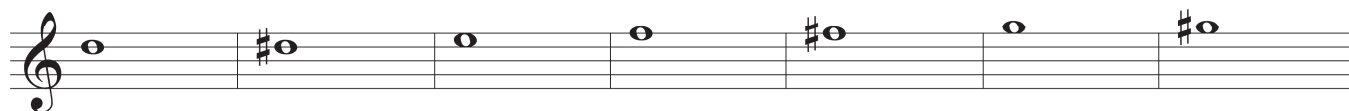
Trumpet in B $\flat$ 

Directions:

1. Warm-up before charting, for a minimum of 15 minutes.
2. After warming up completely, use the electronic tuner to tune precisely to the indicated reference pitch(es).
3. Your partner will operate the tune and record your results. Do not look at the tuner while playing!
4. Play each line twice. On the first time, record the general tendency of each note. Write + for sharp, write - for flat, or write 0 for in tune.
5. On the second time, record precisely the number of cents sharp or flat the pitch is being played.

For example, if the pitch is played 5 cents flat, write -5. If the pitch is 12 cents sharp, write +12. If the pitch is in tune, write 0 (zero).

Tuning Notes



Name: \_\_\_\_\_

Date: \_\_\_\_\_

Partner's Name: \_\_\_\_\_

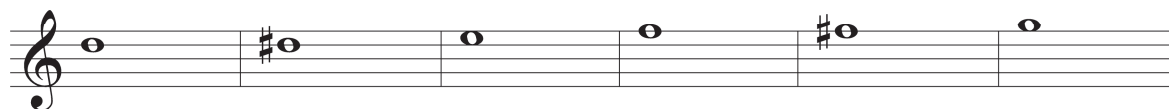
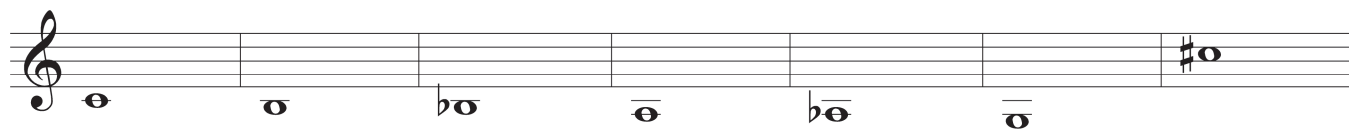
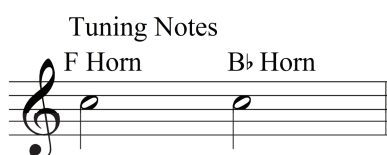
# Pitch Tendency Chart

Horn in F

## Directions:

1. Warm-up before charting, for a minimum of 15 minutes.
2. After warming up completely, use the electronic tuner to tune precisely to the indicated reference pitch(es).
3. Your partner will operate the tune and record your results. Do not look at the tuner while playing!
4. Play each line twice. On the first time, record the general tendency of each note. Write + for sharp, write - for flat, or write 0 for in tune.
5. On the second time, record precisely the number of cents sharp or flat the pitch is being played.

For example, if the pitch is played 5 cents flat, write -5. If the pitch is 12 cents sharp, write +12. If the pitch is in tune, write 0 (zero).



Name: \_\_\_\_\_

Date: \_\_\_\_\_

Partner's Name: \_\_\_\_\_

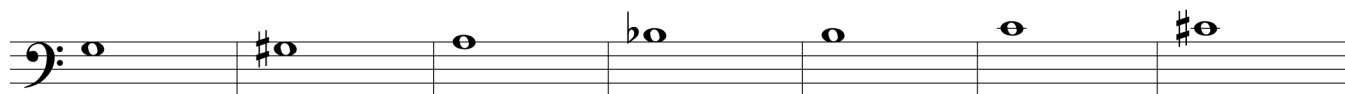
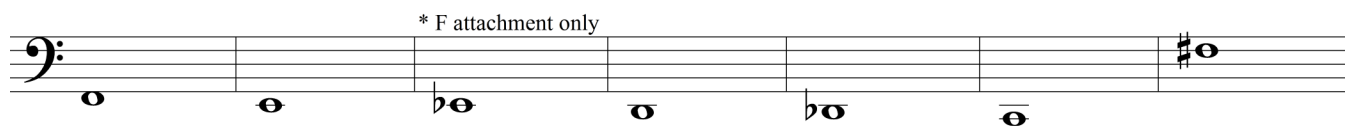
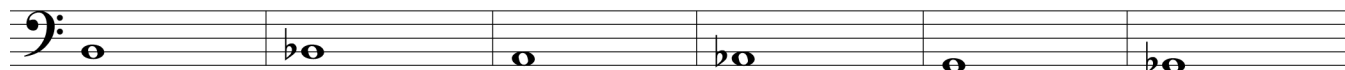
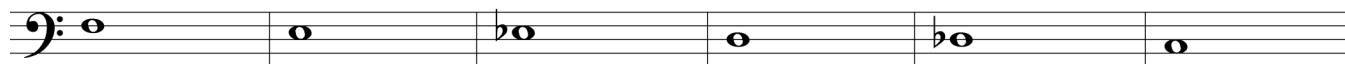
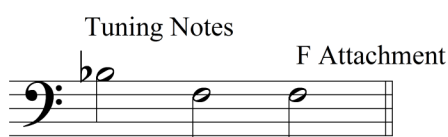
# Pitch Tendency Chart

## Trombone

### Directions:

1. Warm-up before charting, for a minimum of 15 minutes.
2. After warming up completely, use the electronic tuner to tune precisely to the indicated reference pitch(es).
3. Your partner will operate the tune and record your results. Do not look at the tuner while playing!
4. Play each line twice. On the first time, record the general tendency of each note. Write + for sharp, write - for flat, or write 0 for in tune.
5. On the second time, record precisely the number of cents sharp or flat the pitch is being played.

For example, if the pitch is played 5 cents flat, write -5. If the pitch is 12 cents sharp, write +12. If the pitch is in tune, write 0 (zero).





Name: \_\_\_\_\_

Date: \_\_\_\_\_

Partner's Name: \_\_\_\_\_

# Pitch Tendency Chart

## Euphonium

### Directions:

1. Warm-up before charting, for a minimum of 15 minutes.
2. After warming up completely, use the electronic tuner to tune precisely to the indicated reference pitch(es).
3. Your partner will operate the tune and record your results. Do not look at the tuner while playing!
4. Play each line twice. On the first time, record the general tendency of each note. Write + for sharp, write - for flat, or write 0 for in tune.
5. On the second time, record precisely the number of cents sharp or flat the pitch is being played.

For example, if the pitch is played 5 cents flat, write -5. If the pitch is 12 cents sharp, write +12. If the pitch is in tune, write 0 (zero).

