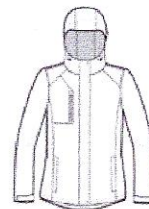


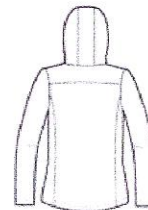


This hardworking, parka-length, insulated jacket is critically seam-sealed to stand up to wet, wind and cold with reliable, three-season protection.

- 100% polyester with DWR finish
- 7-ounce, polyester fleece inner body lining
- 2-ounce polyfill in sleeves
- 3000MM fabric waterproof rating
- 3000G/M2 fabric breathability rating
- Adjustable hood with locking drawcord to customize fit
- Waterproof chest pocket with locking zipper pull
- Front zippered pockets
- Full-length exterior storm flap with snap closures
- Self-fabric adjustable tab cuffs with hook and loop closures
- Port Pocket™ for easy embroidery access
- Open hem with drawcord and toggles



front

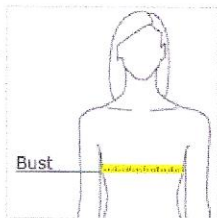


back

CARE INSTRUCTIONS

Machine wash cold gentle cycle with like colors. Use mild detergent. Remove immediately. Do not allow to lay on itself when wet. Only non-chlorine bleach when needed. Tumble dry low. Cool iron if needed or dry clean.

HOW TO MEASURE



BUST

With arms down at sides, measure around the upper body, under arms and around the fullest part of the bust.

Ladies

SIZE CHART

| | XS | S | M | L | XL | XXL | 3XL | 4XL |
|------|-------|-------|-------|-------|-------|-------|-------|-------|
| Size | 2 | 4/6 | 8/10 | 12/14 | 16/18 | 20/22 | 24/26 | 28/30 |
| Bust | 32-34 | 35-36 | 37-38 | 39-41 | 42-44 | 45-47 | 48-51 | 52-55 |

COLOR INFORMATION



Black
PMS NTR BLACK CPMS 7691 C



Direct Blue
PMS 533 C



True Navy
PMS 533 C