

Part 3

Alto Sax.

Baldwin High School

Alma Mater

Musical notation for Part 3: Alma Mater. The score consists of three staves of music in treble clef, key of D major (one sharp), and 4/4 time. The first staff contains measures 1 through 6. The second staff contains measures 7 through 12. The third staff contains measures 13 through 18. The music features a mix of quarter, eighth, and dotted notes, with some rests and phrasing slurs.

Part 4

Alto Sax.

Baldwin High School

Scotland The Brave

Musical notation for Part 4: Scotland The Brave. The score consists of four staves of music in treble clef, key of D major (one sharp), and 2/4 time. The first staff contains measures 1 through 9. The second staff contains measures 10 through 20. The third staff contains measures 21 through 30. The fourth staff contains measures 31 through 36. The music is characterized by a rhythmic pattern of eighth and sixteenth notes, with some quarter notes and rests.

Part 3

Baritone (B.C.)

Baldwin High School

Alma Mater

Musical score for Part 3 of 'Alma Mater'. The score is written in bass clef, 4/4 time, and B-flat major. It consists of three staves of music. The first staff starts with a measure rest and contains measures 1 through 6. The second staff starts with a measure rest and contains measures 7 through 12. The third staff starts with a measure rest and contains measures 13 through 18. The piece concludes with a double bar line.

Part 4

Baritone (B.C.)

Baldwin High School

Scotland The Brave

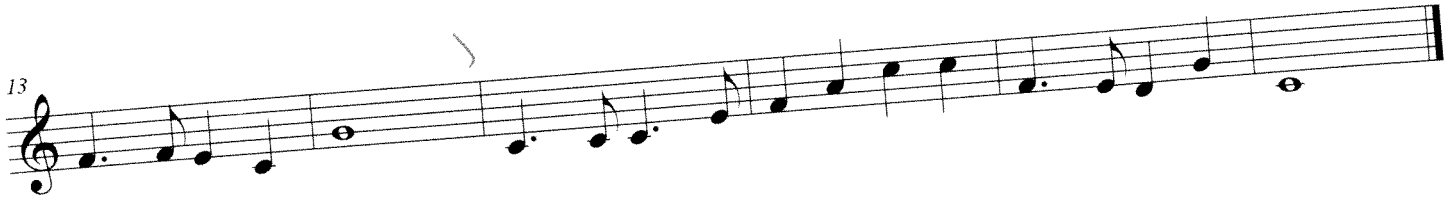
Musical score for Part 4 of 'Scotland The Brave'. The score is written in bass clef, 2/4 time, and B-flat major. It consists of four staves of music. The first staff contains measures 1 through 9. The second staff starts with a measure rest and contains measures 10 through 20. The third staff starts with a measure rest and contains measures 21 through 30. The fourth staff starts with a measure rest and contains measures 31 through 36. The piece concludes with a double bar line.

Pac 3

Baritone (T.C.)

Baldwin High School

Alma Mater



Pm 3

Clarinet in B \flat 1

Baldwin High School

Alma Mater



Pm 4

Clarinet in B \flat 1

Baldwin High School

Scotland The Brave



Pie 3
Clarinet in B \flat 2

Baldwin High School
Alma Mater

Musical score for 'Alma Mater' in 4/4 time, Clarinet in B \flat 2. The score consists of three staves of music. The first staff starts with a treble clef and a 4/4 time signature. The melody is written in a single line. The second staff begins at measure 7 and the third at measure 13. The music features a mix of quarter, eighth, and sixteenth notes, with some rests and a final whole note.

Pie 4
Clarinet in B \flat 2

Baldwin High School
Scotland The Brave

Musical score for 'Scotland The Brave' in 2/4 time, Clarinet in B \flat 2. The score consists of four staves of music. The first staff starts with a treble clef and a 2/4 time signature. The melody is written in a single line. The second staff begins at measure 10, the third at measure 19, and the fourth at measure 27. The music features a mix of quarter, eighth, and sixteenth notes, with some rests and a final whole note.

Part 3

Baldwin High School

Alma Mater

Clarinet in B \flat 3



Pie 3

Baldwin High School

Flute

Alma Mater

Musical score for 'Alma Mater' in G major, 4/4 time. The score consists of three staves of music. The first staff begins with a treble clef, a key signature of one flat (F major), and a 4/4 time signature. The melody features a mix of quarter, eighth, and sixteenth notes, with some rests and phrasing slurs. The second staff starts at measure 7, and the third staff starts at measure 13. The piece concludes with a double bar line.

Pie 4

Baldwin High School

Flute

Scotland The Brave

Musical score for 'Scotland The Brave' in G major, 2/4 time. The score consists of four staves of music. The first staff begins with a treble clef, a key signature of one flat (F major), and a 2/4 time signature. The melody is characterized by a steady eighth-note rhythm. The second staff starts at measure 10, the third at measure 19, and the fourth at measure 28. The piece ends with a double bar line.

Pre 3

Mellophone

Baldwin High School

Alma Mater

Handwritten musical score for 'Alma Mater' on a mellophone. The score consists of three staves of music in 4/4 time, starting with a treble clef and a key signature of one flat (Bb). The first staff begins with a 7-measure rest. The second staff begins with a 7-measure rest. The third staff begins with a 13-measure rest. The melody is written in a simple, rhythmic style with quarter and eighth notes.

Pre 4

Mellophone

Baldwin High School

Scotland The Brave

Handwritten musical score for 'Scotland The Brave' on a mellophone. The score consists of four staves of music in 2/4 time, starting with a treble clef and a key signature of one flat (Bb). The first staff begins with a 10-measure rest. The second staff begins with a 10-measure rest. The third staff begins with a 21-measure rest. The fourth staff begins with a 30-measure rest. The melody is written in a simple, rhythmic style with quarter and eighth notes.

Part 3

Tenor Sax.

Baldwin High School

Alma Mater



Part 4

Tenor Sax. 1

Baldwin High School

Scotland The Brave



Part 3

Trombone

Baldwin High School

Alma Mater

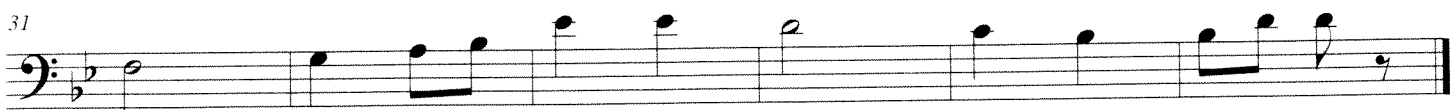


Part 4

Trombone

Baldwin High School

Scotland The Brave



Pre 3

Trumpet in B \flat 1

Baldwin High School

Alma Mater

Musical score for 'Alma Mater' in 4/4 time. The score consists of three staves of music. The first staff starts at measure 1 and ends at measure 6. The second staff starts at measure 7 and ends at measure 12. The third staff starts at measure 13 and ends at measure 18. The music features a mix of quarter, eighth, and dotted notes, with some rests and phrasing slurs.

Pre 4

Trumpet in B \flat

Baldwin High School

Scotland The Brave

Musical score for 'Scotland The Brave' in 2/4 time. The score consists of four staves of music. The first staff starts at measure 1 and ends at measure 9. The second staff starts at measure 10 and ends at measure 18. The third staff starts at measure 19 and ends at measure 27. The fourth staff starts at measure 28 and ends at measure 36. The music is characterized by a fast, rhythmic melody with many eighth and sixteenth notes, and frequent rests.

Pan 3
Trumpet in B \flat 2

Baldwin High School Alma Mater



Part 3

Trumpet in B \flat 3

Baldwin High School

Alma Mater



Prc 3

Baldwin High School

Tuba

Alma Mater

Musical score for 'Alma Mater' in bass clef, 4/4 time, key of B-flat major. The score consists of three staves of music. The first staff starts at measure 1 and ends at measure 6. The second staff starts at measure 7 and ends at measure 12. The third staff starts at measure 13 and ends at measure 18. The music features a steady eighth-note melody with some rests and a final whole note.

Prc 4

Baldwin High School

Tuba

Scotland The Brave

Musical score for 'Scotland The Brave' in bass clef, 2/4 time, key of B-flat major. The score consists of four staves of music. The first staff starts at measure 1 and ends at measure 9. The second staff starts at measure 10 and ends at measure 20. The third staff starts at measure 21 and ends at measure 30. The fourth staff starts at measure 31 and ends at measure 34. The music features a rhythmic melody with eighth and sixteenth notes, and a final whole note.